



# TESI SRM



# STANDARDISED, SCALABLE SUITE TO MANAGE SUPPLY CHAIN PROCESSES AND MAXIMISE EFFICIENCY

**TESI SRM**, a software suite of the TESISQUARE Platform, allows you to organise and manage the entire **Source-to-Pay** cycle for purchasing direct and indirect goods and services in a simple and efficient way. It also allows the supplier to publish the progress of the accounting entry and the payment status of the invoice. It offers broad and granular data visibility by integrating internal and external data flows into a single central system to improve performance and reduce supply risks.

**TESI SRM** helps supply chain managers to perform very critical activities that require a high level of accountability, such as monitoring performance and service levels or concluding contracts. The suite is also a booster for **better risk management**, thus making your supply chain more resilient, also from a sustainability perspective.

## ADVANTAGES



### VISIBILITY

Consolidate the different data flows from internal and external systems into a single central system to allow full transparency and real-time traceability of each process step.



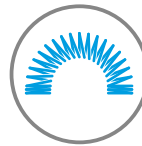
### COLLABORATION

Modernise collaboration with suppliers through complete digitisation of the supply chain, easy multi-channel integration and automated document exchange with the trading partner.



### REACTIVITY

Timely availability of all the necessary information to quickly reformulate agreements with suppliers and subcontractors following sudden and disruptive changes in demand and to be able to intervene in exceptional circumstances.



### FLEXIBILITY

Proactively manage supplier services, check deliveries and delivery times according to contracts and plan incoming goods activities.

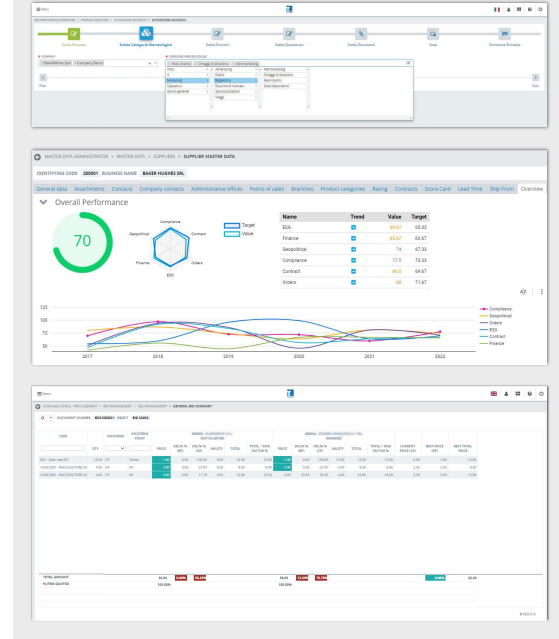


### PERFORMANCE

Simplify operational processes in the supply chain through digitisation and automation, improving decision-making, reducing time to market and saving costs.

## INNOVATION TO IMPROVE PERFORMANCE

**TESISQUARE Platform** has now been enhanced with new technologies to improve responsiveness, visibility and collaboration for increased performance. Thanks to **RRPA (Robotic Process Automation)** and **Inteligencia Artificial**, supply chain processes can be managed automatically and faster: automatic document recognition, the qualification process via the RPA engine, automated rework management via RPA and other automation processes simplify user interaction, reduce error rates, optimise operations and reduce costs.



### SOURCING

Support and digitise all your procurement, from supplier sourcing and e-procurement events (RFx) to contract management and auditing.



### PROCUREMENT

Make the most of the advantages brought by digitalisation, benefit from cost reductions, manage Maverick spending and increase compliance in direct and indirect procurement processes.



### REPLENISHMENT

Collaboration and digitisation streamline the inventory process throughout the supply chain, ensuring efficiency and optimal stock levels.



### EXECUTION

Enable a collaborative process with suppliers to better plan how to manage and control the flow of goods and services from order processing to warehousing.

**ENTER**  
TESISQUARE'S WORLD



**in**   **f**  
tesisquare.com